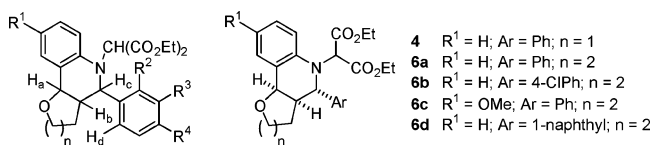


Lewis Acid-Promoted Carbon–Carbon Bond Cleavage of Aziridines: Divergent Cycloaddition Pathways of the Derived Ylides [*J. Am. Chem. Soc.* **2004**, *126*, 2294–2295]. Patrick D. Pohlhaus, Roy K. Bowman, and Jeffrey S. Johnson*

The stereostructures of **4** and **6a–d** were incorrectly assigned. For compounds **4**, **6a**, **6b**, and **6c**, cross-peaks in the NOESY spectra between H_d and H_a confirm the *cis* relationship of the aryl group and H_a . Because of overlap of key peaks for compound **6d**, we are unable to unambiguously confirm the same *cis* relationship between the naphthyl group and H_a ; however, the small structural differences between the compounds lead us to suggest the same stereostructure by analogy. The correct structures are shown below, and the NOESY spectra are contained in the original Supporting Information. The authors regret this error.



JA0622958

10.1021/ja0622958

Published on Web 04/21/2006